

Entity-Focused Dense Passage Retrieval for Outside-Knowledge Visual Question Answering

Jialin Wu and Raymond J. Mooney

Knowledge Retrieval for OK-VQA

Q: This plush toy was named after what US president?

The name **teddy bear** comes from former United States President **Theodore Roosevelt**, who was often referred to as "Teddy"



Why Entity-Focused Retrieval

Q: What holiday is this?

A: Thanksgiving.

Critical entity: **turkey**



Q: Is the large yellow object a fruit or a vegetable? A: vegetable.

critical entity: **bell pepper**



EnFoRe Approach

Step1: Entities Set Construction

Q: This **plush toy** was named after what US **president**? A: Teddy Roosevelt



Question-based Entities:

Phrases in question: **plush toy**, **president**,

Answer candidates: Roosevelt, ...

Sub-questions: **Teddy bear**, ...

Image-based Entities:

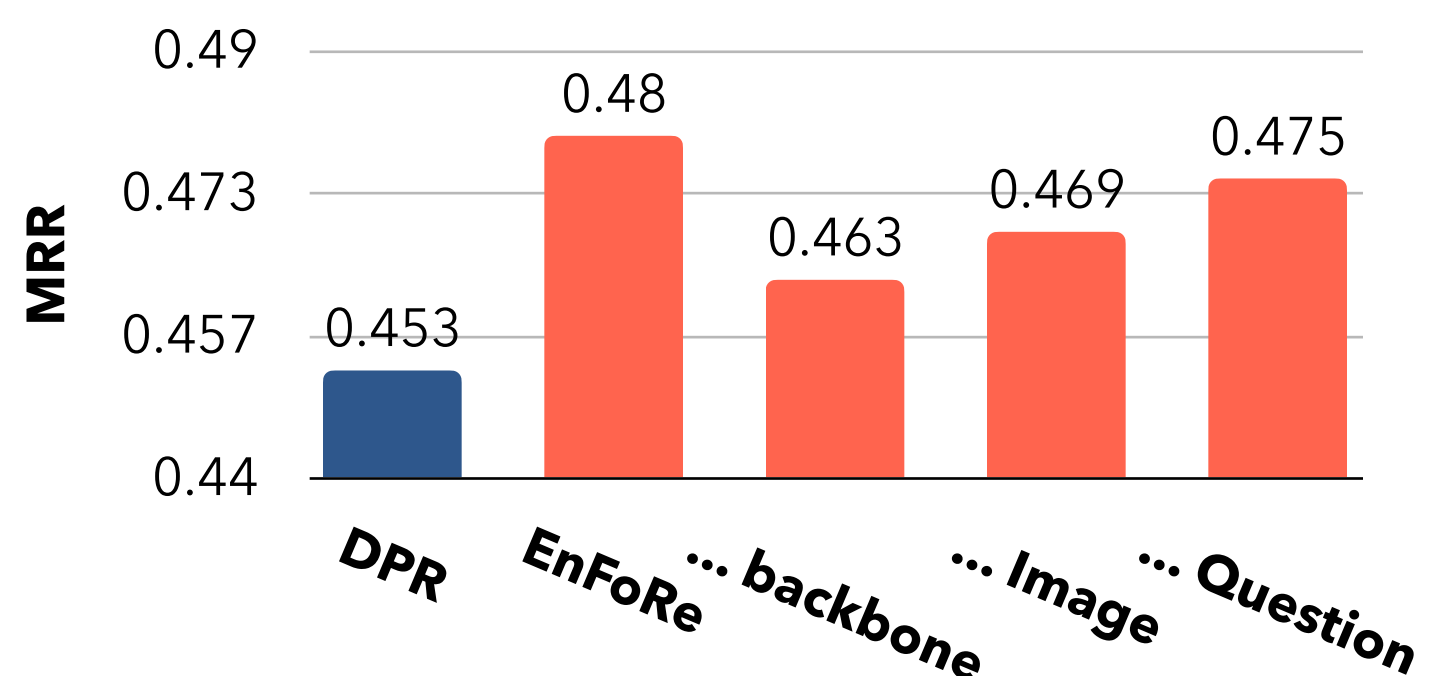
Azure Tagging: **Teddy bear**, ...

Clip Tagging: **Teddy bear**, ...

Phrases in captions: Infant, ...

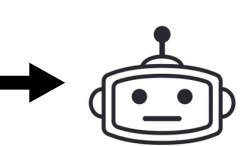
Fitting in the VQA context

Knowledge Retrieval Results on OKVQA



Step2: Oracle entities detection

Is the large yellow object a fruit or a vegetable?

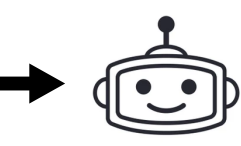


Sparse Passage Retriever

A banana is an elongated, edible fruit – botanically a berry – produced by several kinds of large herbaceous

$1/3 = 0.33$

Is the large yellow object a fruit or a vegetable?
Bell Pepper



Bell pepper The **bell pepper** is ... in different colors, including red, yellow, orange, ... they are commonly used as a vegetable ingredient

$1/1 + 1/4 = 1.25$

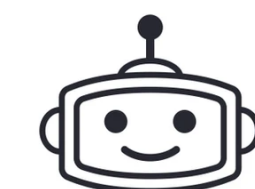
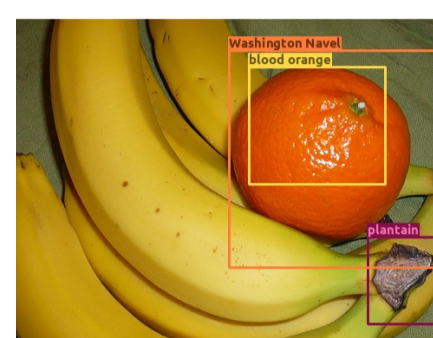
Measured by summed reciprocal ranking

Human Evaluation

Judging whether KAT knowledge or EnFoRe knowledge contains the most supportive evidence to the answer?

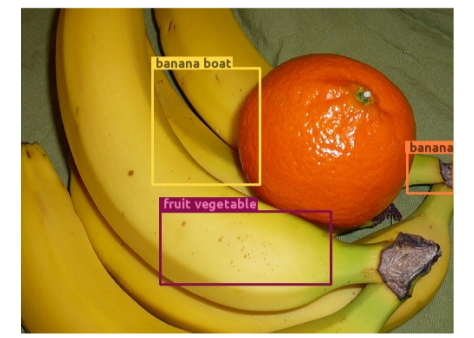
Q: What is the main benefits of healthy properties these fruit contain? A: potassium

EnFoRe



EnFoRe wins 61.8%

KAT



Step3: Entity-Focused Dense Retrieval

Q: This **plush toy** was named after what US **president**?



Entity set construction (Sec 3)

Query

query features f_q

query-entity importance S_{qe}

entity features f_e

Entity matching + Query-passage matching

passage-entity importance S_{pe}

passage features f_p

plush toy
president
teddy bear (oracle)
infant
...

Entities

Passage 1
...
Passage N
A teddy bear is a stuffed toy in the form of a bear ..., and named after President Theodore Roosevelt ..., the teddy bear ...

Passages

Naturally, the fruit of the Hassaku orange is a good source of vitamin C, folic acid, potassium and fiber.

Fruit vegetable is a fruit commonly referred to as a vegetable because they are savory (not sweet).

VQA Results on OKVQA

